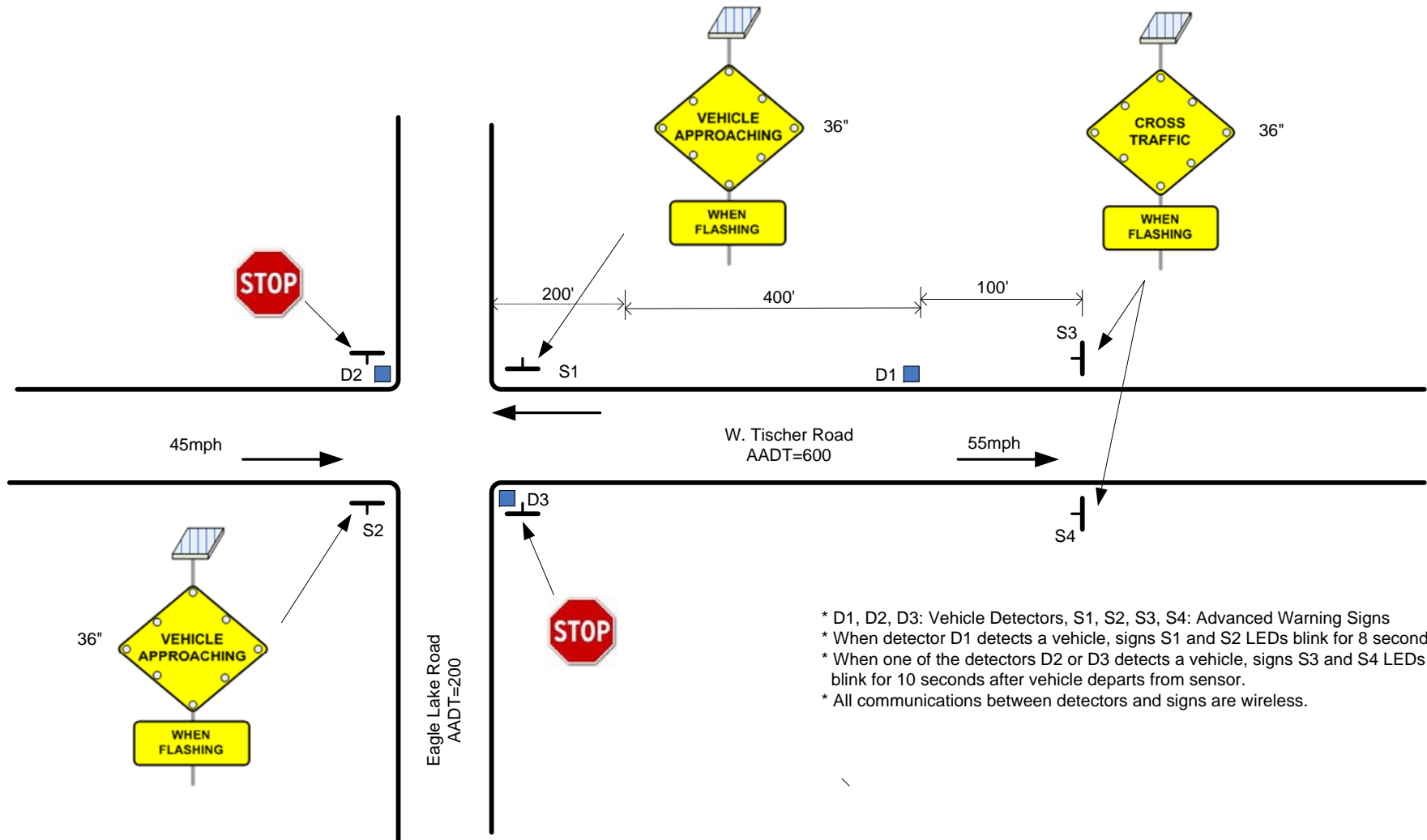


Advanced Warning Sign Project: Eagle Lake/ W. Tischer Rd Intersection



- * D1, D2, D3: Vehicle Detectors, S1, S2, S3, S4: Advanced Warning Signs
- * When detector D1 detects a vehicle, signs S1 and S2 LEDs blink for 8 seconds.
- * When one of the detectors D2 or D3 detects a vehicle, signs S3 and S4 LEDs blink for 10 seconds after vehicle departs from sensor.
- * All communications between detectors and signs are wireless.